

SL27C Roller

ScreenLine[®] SL27C Roller is a patented magnetic system with manual operation (raising function) for roller blinds incorporated within 27-mm double glazing units and featuring Verosol[®] fabrics, which are coated with an aluminium layer on one side.

The external magnetic device applied on the glass by means of high-resistance adhesive tape contains a cord loop and a magnet that is perfectly interfaced with the magnetic joint of the internal drive, which is completely housed inside the head rail. The movement provided to the cord enables the rotation of the magnets that activate the blind.

The cord is kept under tension by means of a cord tensioner applied on the glass. The correct unrolling of the fabric is ensured by a special valance, whereas a double mechanical end stop allows the blind to be stopped at its limit positions.

SL27C Roller is particularly suited to structural façades, although there are actually no limits to its application.

It ensures with time the insulating properties of the double or triple glazing unit, notably protection from dirt or weather conditions. The integrated unit can be fitted into the window frame like standard insulating glass.



COLOUR RANGE

Verosol fabric – metallised on the outside



Quality



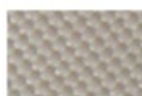
816 FR

Trasparent



812 FR

Semi-trasparent



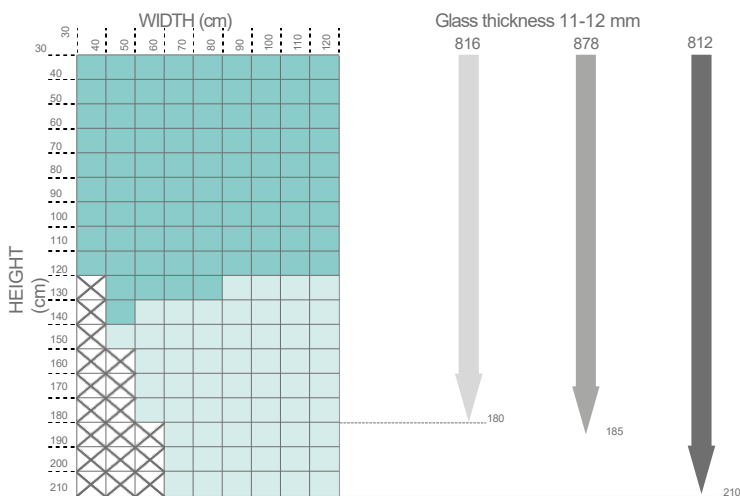
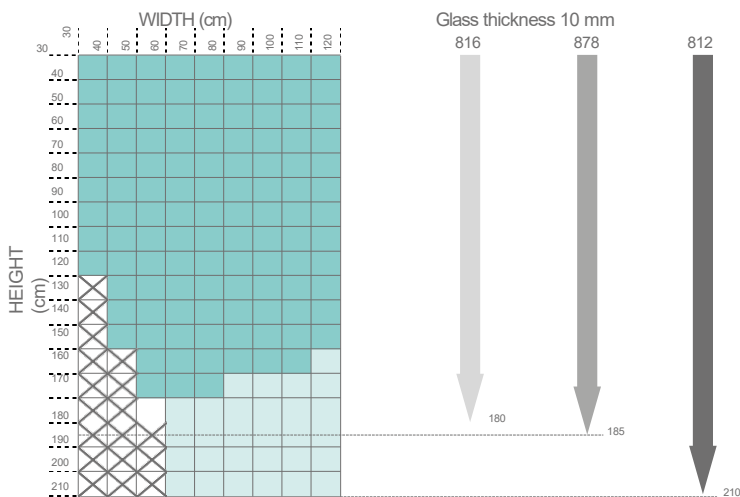
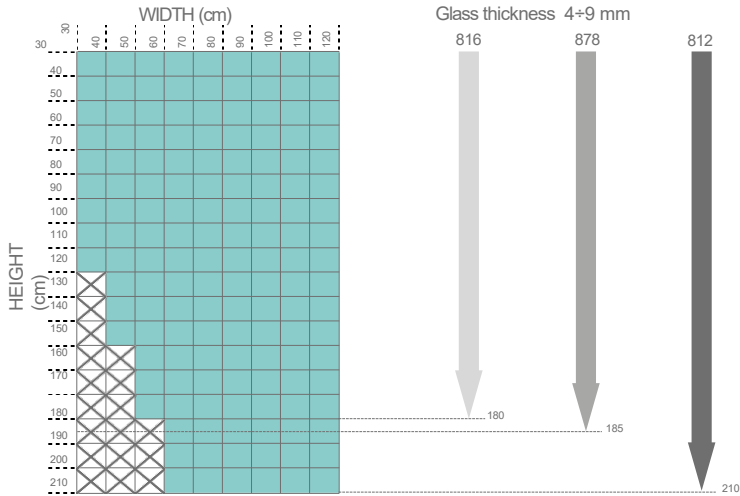
878 FR

Opaque



FEASIBILITY CHARTS

SL27C Roller



Verosol[®] fabrics

- 816 Transparent
- 812 Semi-transparent
- 878 Opaque

- Direct internal control device
- Reduced internal control device
- Not feasible